

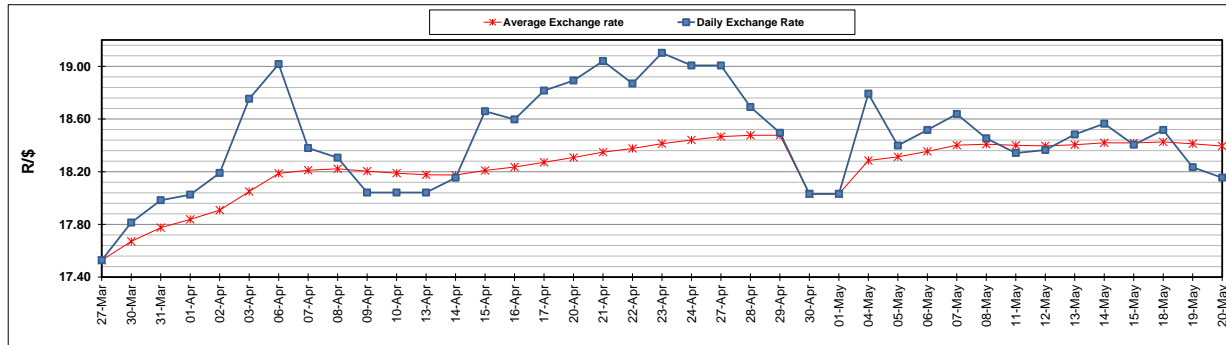
	PETROL 95 ULP	PETROL 93 ULP & LRP	DIESEL 0.05%	DIESEL 0.005%	ILL. PAR.
GAUTENG PUMP PRICE (SA c/l) AS FROM 06/05/2020	1,222.000	1,202.000	-	-	-
WHOLESALE PRICE (SA c/l) AS FROM 06/05/2020	-	-	1,108.560	1,117.960	449.828
SINGLE NATIONAL MAXIMUM RETAIL PRICE	-	-	-	-	543.000
BASIC FUEL PRICE - 20/05/2020 (SA c/l)	490.726	471.246	478.777	487.290	417.036
PRESS RELEASE CONTRIBUTION TO BFP 06/05/2020 - 20/05/2020 (SA c/l)	274.770	264.770	357.630	367.030	245.128
UNIT OVER/(UNDER) RECOVERY - 20/05/2020 (SA c/l)	(215.956)	(206.476)	(121.147)	(120.260)	(171.908)
AVERAGE BASIC FUEL PRICE 30/04/2020 - 20/05/2020	411.308	393.246	389.300	398.409	291.575
AVERAGE UNIT OVER/(UNDER) RECOVERY 30/04/2020 - 20/05/2020	(90.138)	(82.076)	11.264	10.221	13.020

ANALYSIS MOVEMENT OF AVERAGE OVER/(UNDER) RECOVERY

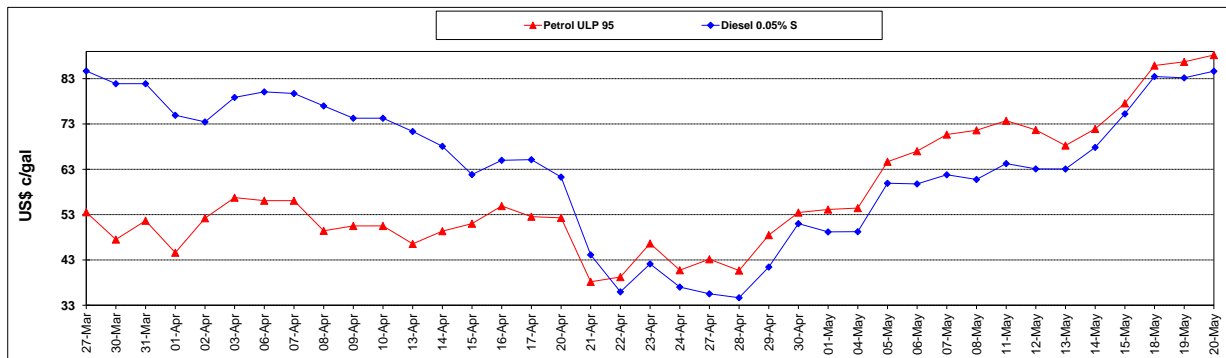
	PETROL 95	PETROL 93	DIESEL 0.05%	DIESEL 0.005%	ILL. PAR.
- MOVEMENT IN INTERNATIONAL PRODUCT PRICES	(91.974)	(83.831)	9.525	8.443	11.719
- MOVEMENT IN EXCHANGE RATE	1.836	1.755	1.738	1.778	1.301
AVERAGE UNIT OVER/(UNDER) RECOVERY 30/04/2020 - 20/05/2020	(90.138)	(82.076)	11.264	10.221	13.020

R/\$ EXCHANGE RATE - (R/\$18.1546 - 20/05/2020)

EXCHANGE RATE USED IN BASIC FUEL PRICE



INTERNATIONAL PRODUCT PRICES OF BASKET USED IN BASIC FUEL PRICE



BASIC FUEL PRICE IN SA CENTS PER LITRE

